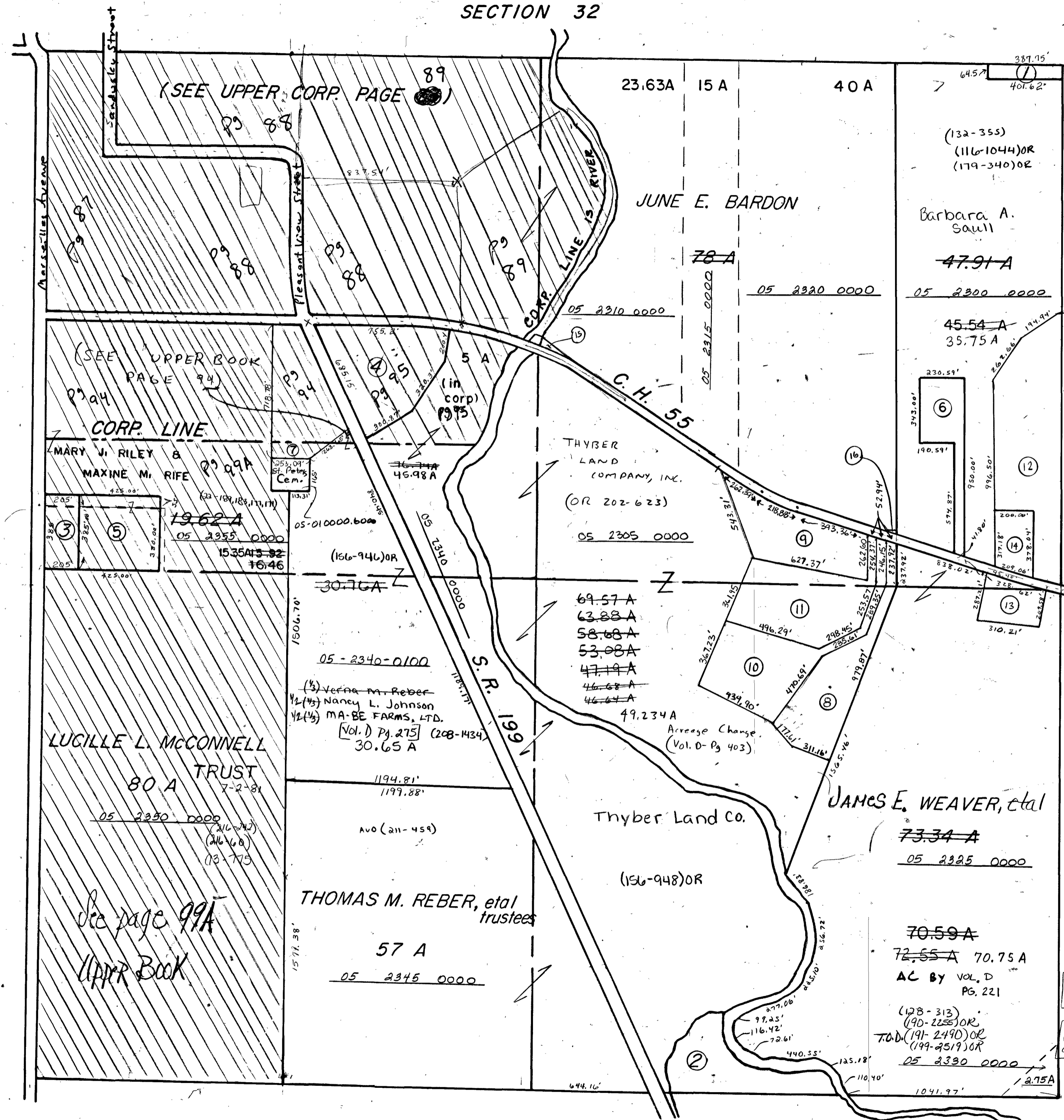


CRANE TWP. SECTION 5 TWP. 3 S. RANGE 14 EAST

SECTION 32

S. R. 67

SECTION 6



SECTION 4

- ① VILLAGE OF UPPER SANDUSKY
59 A
- ② THOMAS M. REBER, et al trustees
3.18 A 05 2335 0000
- ③ HOMER F. SAMMET, ETUX
1.81 A 05 2365 0000
- ④ T. H. LAUTERMILCH, ETUX
6.69 A 06 45 0780 in exp. (VOL. 4 PG. 53)
- ⑤ HOMER F. SAMMET, ETUX
3.16 A 05-2300-0000 (208-442) (VOL. 6- PG. 53)
3.22 A
0.54 A 05-2335-0100 (Acceage Change By Survey)
- ⑥ DANNY L. SAULL, etux
2.37 A 05-2300-0100 (211-371) (132-355) (97-04)R
- ⑦ GEENA SNOW, etvir
0.57A 05-2335-NS (Vol. C-Pg. 45) (38-877) (38-879)
- ⑧ THOMAS SCHILLING, ETUX (84-953)
5.69 A 05-2305-0100 (VOL. C, PG. 653) (02-64/R)
- ⑨ MATTHEW R. MALONE, ETUX (85-111)
5.20 A 05-2305-0400 (105-901) (VOL. C, PG. 653) (02-67/R)
- ⑩ MARVIN ROBINETTE, ETUX (85-114)
5.60 A 05-2305-0200 (VOL. C, PG. 653) (02-65/R)
- ⑪ CHRISTINA A. JOHNSON (86-574)
5.90 A 05-2305-0300 (VOL. C, PG. 653) (02-66/R)
- ⑫ ROBERT & PATRICIA BARDON OR (179-334)
9.79 A 05-2300-0200 (VOL. C- PG. 1043)
8.19 A
- ⑬ JAMES E. WEAVER (200-234, 232) OR
1.80 A 05-2325-0100 (09-251/R) (VOL. C-PG. 1198)
- ⑭ Ryan Vanhorn (09-37/R)
1.60 A 05-2300-02-01
(OR 200-4571) (OR 200-1736) (VOL. C-PG. 1214)
- ⑮ JUNE E. BARDON (201-2241) OR
0.506 A 05-2305-0500 (VOL. D-PG. 403)
- ⑯ JUNE E. BARDON (201-2241) OR
0.043 A 05-2305-0600 (VOL. D-PG. 403)

SECTION 8