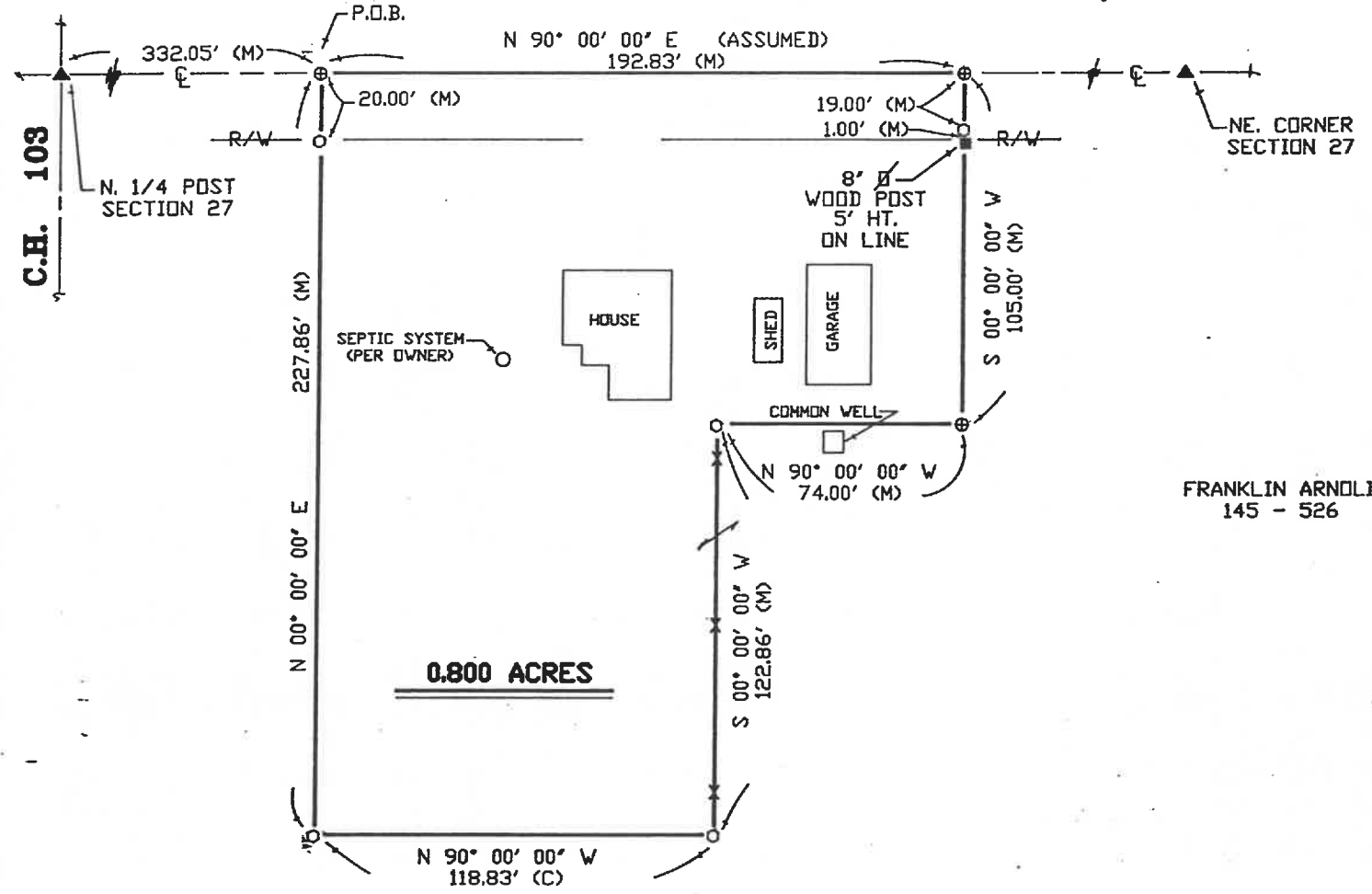


COUNTY HIGHWAY 64 40' R/W



C.H. 103

REFERENCES

DEED VOLUME & PAGE AS SHOWN  
WYANDOT COUNTY CORNERSTONE REFERENCES  
SURVEY NO. 616

NOTE: ALL IRON ROD SET ARE 1/2" DIA. WITH PERSONALIZED CAPS (HANK # 6972) DRIVEN FLUSH.

SURVEY NO. 7488  
VOL 6 PAGE 605  
DATE JULY 19, 1990

FRANKLIN ARNOLD  
145 - 526

LEGEND

SET	FOUND	DESCRIPTION
△	▲	STONE
⊠	⊠	MONUMENT BOX
⊕	⊕	CONC. MONUMENT
⊗	⊗	RAILROAD SPIKE
⊙	⊙	NAIL
⊘	⊘	IRON ROD
⊚	⊚	IRON PIPE
⊛	⊛	DRILL HOLE
⊜	⊜	WOOD POST
D	D	DEED
P	P	PLAT
M	M	MEASURED
S	S	SURVEYED
C	C	CALCULATED

I HEREBY DECLARE THAT THE ABOVE PARCEL WAS SURVEYED DURING JULY, 1990.  
PROPERTY LINES SHOWN ARE LOCATED FROM DEEDS ON RECORD AND ARE DEED LINES.  
BEARINGS ARE ASSUMED FOR ANGULAR MEASUREMENT ONLY. ALL INFORMATION SHOWN IS TRUE AND CORRECT TO THE BEST OF MY KNOWLEDGE AND BELIEF.



James G. Homan  
JAMES G. HOMAN, JR., P.S. #6912 DATE 7-17-90  
ORIGINAL SIGNED IN RED INK

**HANK AND ASSOCIATES, INC.**  
ENGINEERING • SURVEYING  
49 SOUTH WASHINGTON STREET, TIFFIN, OHIO 44883  
419-447-4300

SURVEY FOR: **FRANK ARNOLD**  
LOCATED IN THE NE 1/4 OF SECTION 27,  
MIFFLIN TOWNSHIP, T-3-S, R-13-E,  
WYANDOT COUNTY, OHIO

DRAWN BY:	CHECKED BY:	SHEET NO.
DJN 7-16-90	JGH	1/1
REVISIONS		JOB NO.
		90072-S