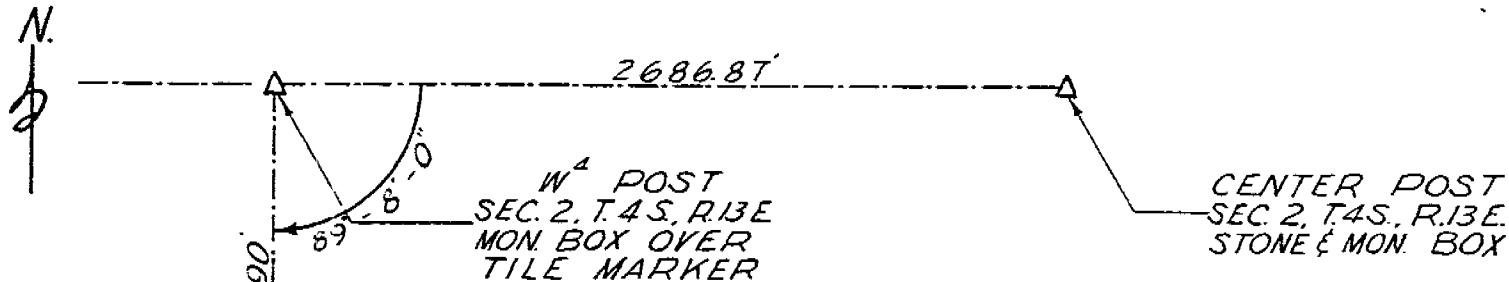


# SURVEY N<sup>o</sup> 1085

ESTABLISHMENT OF W<sup>4</sup> POST SEC. 2 T.4S. R.13E. MARSEILLES TP. DEC. 1969



THE DISTANCE BETWEEN THE STONE AT THE SW COR. AND THE STONE AT THE NW COR. OF S<sup>2</sup> OF SW<sup>4</sup> OF SEC. 2, T.4S., R.13E., WAS MEASURED AND FOUND TO BE 1320.90'. THE LINE BETWEEN THE STONE AT THE SW COR. AND THE STONE AT THE NW COR. OF S<sup>2</sup> OF SW<sup>4</sup> OF SEC. 2, T.4S., R.13E., WAS EXTENDED TO A POINT 1320.90' NORTH OF THE STONE AT THE NW COR. OF S<sup>2</sup> SW<sup>4</sup> SEC. 2, T.4S., R.13E., WHERE THE W<sup>4</sup> POST OF SEC. 2, T.4S., R.13E., MARSEILLES TP. WAS ESTABLISHED.

ESTABLISHMENT MADE BY WYANDOT  
COUNTY ENGINEER'S OFFICE

SW COR.  
SEC. 2 T.4S., R.13E.  
STONE & MON. BOX

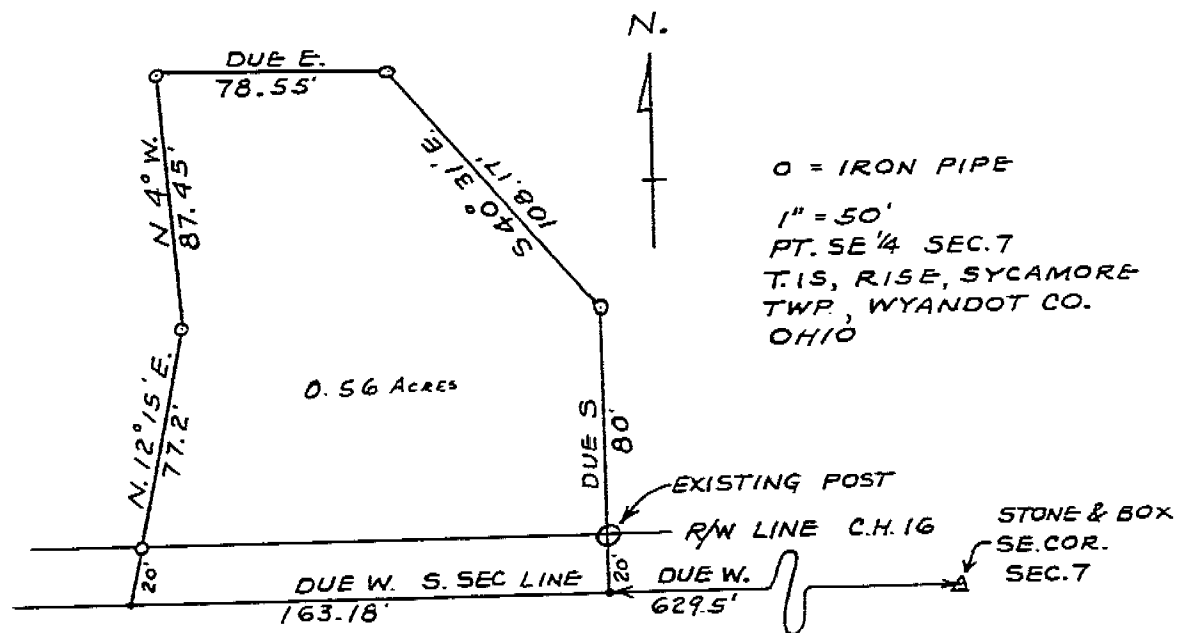
SCALE: 1 INCH = 500 FEET

SYCAMORE  
7-1-15

VOL. 4  
PG. 423

TAX MAP COPY

SURVEY N° 1094 -



PT SE 1/4 SEC 7 SYCAMORE TP.

APRIL 1970

J. B. WEININGER

5647

RALPH HESS to NORMAN ADAMS