

SURVEY NO. 951

MONONCUE and ENVIRONS

After having checked the original plats of Mononcue-1868, Berry and Engles Addition, 1877, Berry, Gibson, Engle Addition 2/14/1878 and Berry and Gibson's Addition 5/13/1878 as recorded in the plat books on file in the Wyandot County Recorder's office and in the survey records in the Wyandot County Engineer's Office to ascertain if any reference to corner stones was made thereon, and finding the only one shown to be the E. $\frac{1}{4}$ post of Sec. 32, T. 2 S., R. 14 E., we proceeded to locate said cornerstone marking the original E. $\frac{1}{4}$ post of Sec. 32, T. 2 S., R. 14 E., Crane Twp., Wyandot County, Ohio, and found same, it now being marked by a cast iron monument box placed thereover and is now recorded in the Wyandot County Engineer's office for reference.

By a previous survey the centerline intersections of Berry Street and River Street had been established. This intersection point was accepted and marked by a brass-capped rod under a cast iron monument box and recorded as above. The total measured distance from the aforesaid E. $\frac{1}{4}$ post of Sec. 32 to the aforesaid intersection of Berry and River Streets was prorated among the property owners on the basis of platted frontages where recorded and previous surveys after deducting full measurement for all recorded streets and alleys, thereby establishing the centerline intersection of existing S. R. 182 with Berry Street, which intersection is now marked by a brass capped rod under a cast iron monument box and recorded, said point being on a straight line between aforementioned monumented points.

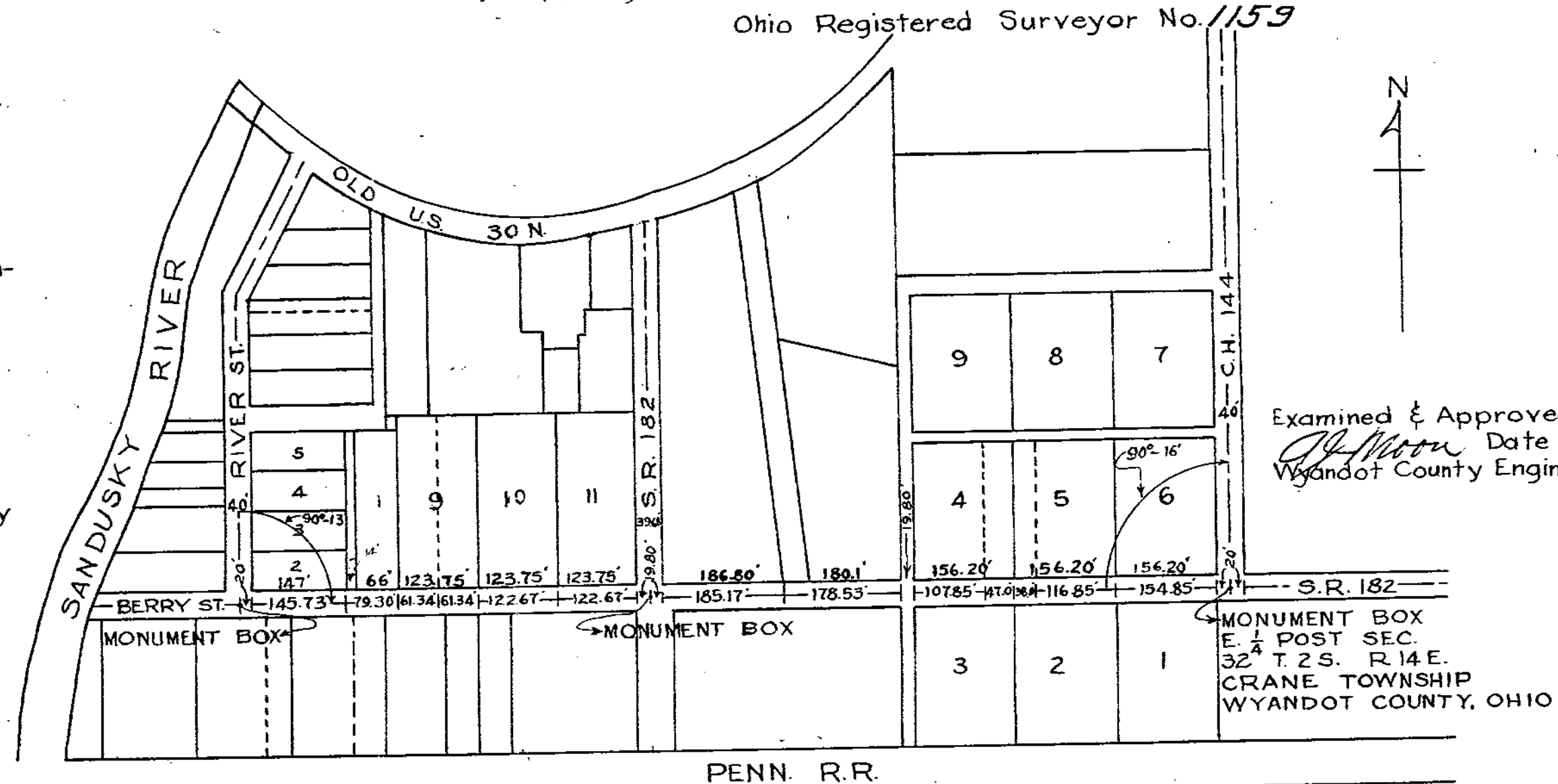
All points and dimensions are shown on the attached plat which work was done to the best of our ability as an equitable means of quieting future dissensions as to property lines on Berry Street in the above Mononcue and Environs.

I hereby certify the above explanation, plat and dimension to be true and correct to the best of my knowledge.

Raymond H. Hehn Date October 19, 1962
(Sig. Tracer)

Ohio Registered Surveyor No. 1159

Note: Dimensions shown in red are plat and previous unrecorded survey dimensions. Dimensions shown in black are from the actual site. Total measurement prorated among property owners in proportion to plat and previous unrecorded survey dimensions.



SURVEY NO. 951