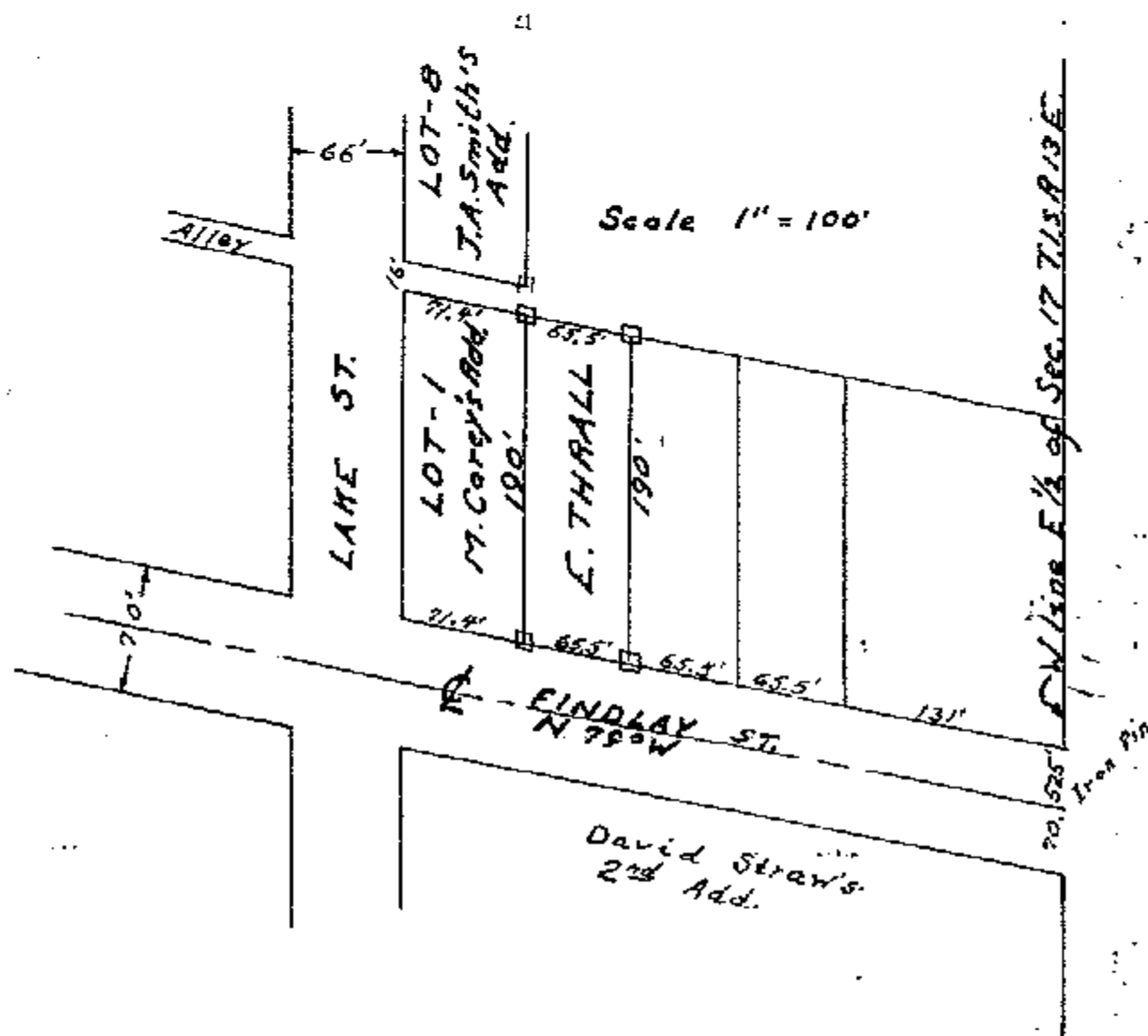


Survey No. 782



I hereby certify that on December 20, 1921, I made a survey of the E. Thrall property in the Village of Carey, Ohio, and found the corners to be located as shown on the above plat. I further certify that on August 28, 1949, I relocated said corners and marked them with concrete monuments.

R. D. McGill
Surveyor.

Recorded June 8, 1950