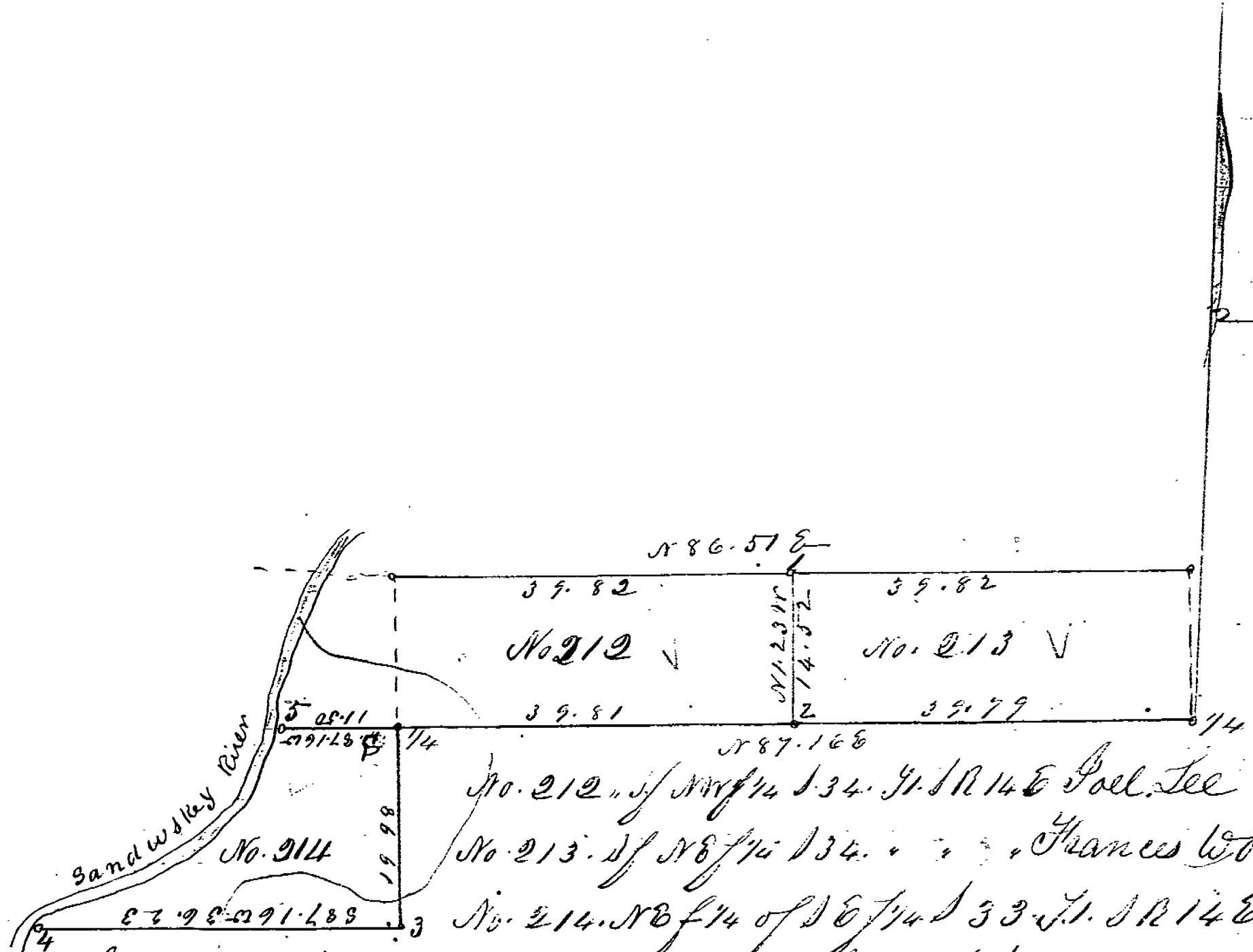


Platted March 11, 1847, pt 136. 1/4 N 1/4 E.
 No. 208. Abraham Bystone No. 209. Same
 No. 210. Jacob Shoffer No. 211 Jefferson Baker

- 1. W. ash 18 in N 86 1/2 W 22 1/2 Maple 16 in S 87 1/2 E 26 1/4
- 2. Elm 16 in S 20 0 53 Red oak 12 in S 29 W 44
- 3. W. oak 36 in S 87 0 23 1/2 Beech 10 in S 80 E 40 1/2
- 4. W. oak 40 in S 45 1/2 W 42 W. oak 36 in S 49 0 21
- 5. W. oak 30 in West 40 in Poplar 4 in N 44 1/2 E 14
- 6. W. oak 36 in S 57 1/2 W 10 1/2 W. oak 24 in N 73 1/2 W 18 3/4

TAX MAP COPY



No. 212 of NW 1/4 S 34. T. 1 N. 14 E. P. 14 E. Joel Lee
 No. 213 of NE 1/4 S 34. T. 1 N. 14 E. Francis Wood
 No. 214 of SE 1/4 S 33. T. 1 N. 14 E.

Surveyed March 12. 1847. Joseph Frederick

- At. 1. Beech 30 in S 25 W 4 Hickory 10 in N 61 1/2 W 50
- 2. W. Ash 8 in N 50 W 3 1/2 Hickory 4 in S 43 1/2 W 19
- 3. W. Ash 10 in N 80 1/2 W 16. Sapopilla 14 in S 34 W 50
- 4. Iron 20 in N 63 1/2 E 14 1/2 Elm 8 in S 53 W 3 1/2
- 5. Elm 8 in S 48 1/2 E 17 1/2 W. Ash 6 in N 37 W 19