

Legal Description

BEING A PARCEL, WHICH HAS ITS ORIGINS IN A PARCEL, CONVEYED IN OFFICIAL RECORD BOOK 139 AT PAGE 213 WHICH IS SITUATED IN THE STATE OF OHIO, COUNTY OF WYANDOT, TOWNSHIP OF CRAWFORD AND BEING PART OF THE SOUTHWEST QUARTER OF SECTION 29, TOWNSHIP 1 SOUTH, RANGE 13 EAST AND BEING MORE PARTICULARLY DESCRIBED AS FOLLOWS: BEGINNING AT A STONE AND METAL BOX FOUND AT THE SOUTHWEST CORNER OF SAID 29.

THENCE ON AN ASSUMED BEARING OF NORTH 00 DEGREES, 00 MINUTES 00 SECONDS EAST (THIS BEARING IS ASSUMED AND ALL OTHER BEARINGS ARE FROM ANGLES AND DISTANCES MEASURED IN THE FIELD) ALONG THE WEST SECTION LINE AND CENTERLINE OF COUNTY HIGHWAY 96 FOR A DISTANCE 645.14 FEET TO A HALF INCH HEAD BOLT SET (HAVING A REFERENCE PIPE 20 FEET EASTERLY THEREOF).

THENCE SOUTH 89 DEGREES 50 MINUTES 05 SECONDS EAST ON A LINE FOR A DISTANCE OF 208.71 FEET TO A HALF INCH IRON PIPE SET WITH CAP 5647 SET ON THE RUTH BECK EAST LINE AND RONALD AND ALICE FORGRAVE SOUTH LINE, THE PLACE OF BEGINNING.

THENCE NORTH 00 DEGREES 00 MINUTES 00 SECONDS EAST ON SAID EAST LINE FOR A DISTANCE OF 151.69 FEET TO A HALF INCH IRON PIPE SET WITH ON CAP 5647 ON THE RONALD AND ALICE FORGRAVE SOUTH LINE.

THENCE SOUTH 89 DEGREES 45 MINUTES 24 SECONDS EAST ON SAID LINE FOR A DISTANCE OF 208.71 FEET TO A HALF INCH IRON PIPE SET WITH CAP 5647 SET ON THE R. AND A. FORGRAVE WEST LINE.

THENCE SOUTH 00 DEGREES 00 MINUTES 00 SECONDS ON A LINE FOR A DISTANCE OF 151.406 FEET TO A HALF INCH IRON PIPE SET WITH CAP 5647 ON THE RANDY AND WENDY WENTLING NORTH LINE.

THENCE NORTH 89 DEGREES 50 MINUTES 05 SECONDS WEST ON SAID LINE FOR A DISTANCE OF 208.71 FEET TO A HALF INCH IRON PIPE SET WITH CAP 5647.

THE PLACE OF BEGINNING AND CONTAINING 0.7247 ACRES MORE OR LESS, BUT SUBJECT TO ALL LEGAL HIGHWAYS AND EASEMENTS OF RECORD AS SURVEYED BY JERRY B. WEININGER, REGISTERED SURVEYOR #5647 OF 6569 COUNTY HIGHWAY 2, McCUTCHENVILLE, OHIO 44844-0186 IN JANUARY, 2017.



Jerry B. Weininger

172

B

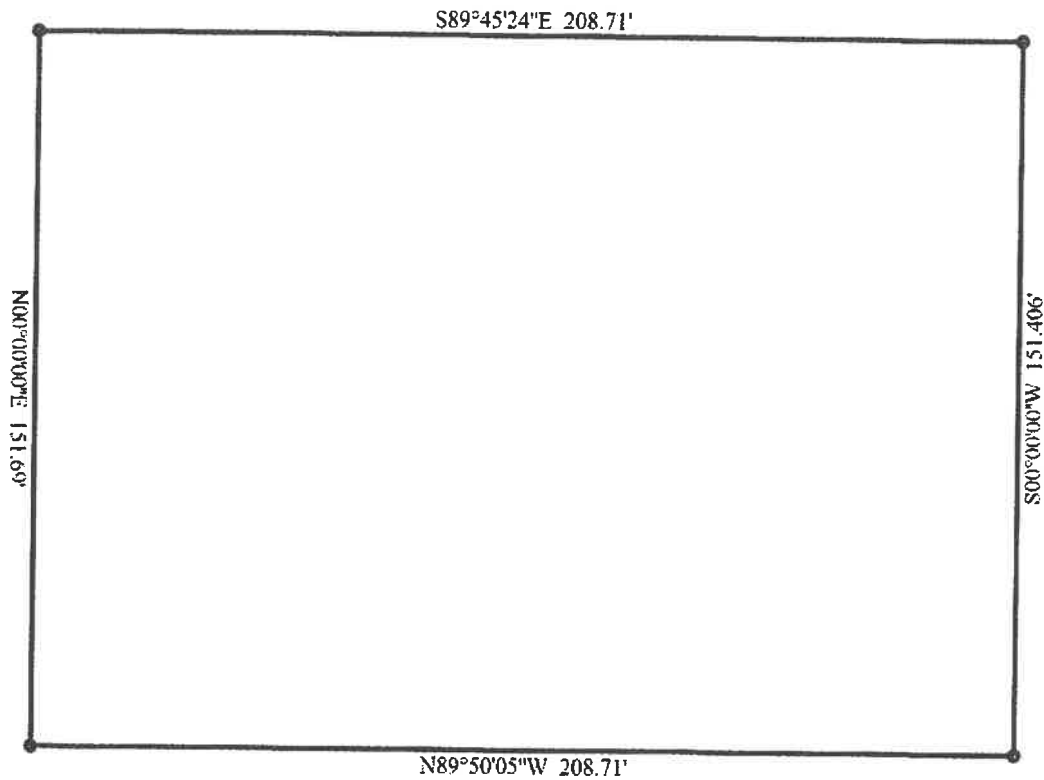
2017



Scale: 1 Inch = 39 Feet
Area: 0.726 Acres (31,629.33 Square Feet)

CRAWFORD 29-01-13 --- 0.7247 ACRES -- FORGRAVE

Area: 0.726 Acres (31,629.33 Square Feet)
Perimeter: 720.5161 Feet
Gap = 0.001



Errors and Omissions Excepted.

172 B

1. N00°00'00"E 151.69'
2. S89°45'24"E 208.71'
3. S00°00'00"W 151.406'
4. N89°50'05"W 208.71'

2017